

# *Wild Things*



## AN NGC STANDARD FLOWER SHOW

Sponsored by  
Ohio Judges Council  
Member of  
National Garden Clubs, Inc.  
Central Atlantic Region of State Garden Clubs, Inc.  
Garden Club of Ohio, Inc.

Nationwide Hotel and Conference Center  
100 Green Meadows Drive South  
Lewis Center, Ohio 43035

Wednesday, April 27, 2022  
2:00 pm – 9:00 pm  
FREE AND OPEN TO THE PUBLIC

## TABLE OF CONTENTS

	<b>Page</b>
Committee Chairmen .....	2
General Rules .....	3
Awards .....	4
Division I Horticulture .....	5
Horticulture Rules .....	5
Division II Design .....	10
Design Rules .....	10
Division III Botanical Arts.....	13
Botanical Arts Rules.....	13
Division IV Education.....	15
Education Rules .....	16

## COMMITTEE CHAIRMEN

General/Schedule Chairman	Cindy Kozakewich	304-677-7417
Design Chairman/Consultant	Debra Turner	505-463-9035
Horticulture Chairman	Barb Snyder	614-538-9384
Botanic Arts Chairman:	Karen Ciula	614-471-3246
Education Chairman/Consultant	Pat Rupiper	740-703-3683
Judges Chairman	Winnie Garabis	614-486-1324
Clerks Chairman	Antonio Garabis	614-486-1324
Signage	Elizabeth Heiser	703-789-3894
Awards Chairman	Cindy Kozakewich	304-677-7417
Photographer	Deborah Wyght	513-871-1997

## General Rules:

1. Members of Garden Club of Ohio, Inc. may enter the show.
2. Entry cards are available from the Entries Chairman, or from the General Chairman.
3. Advance registration is required for Design. Registration is due by April 1, 2022.
4. Horticulture entries will be accepted in Ballroom 1&2 of Nationwide Hotel and Conference Center, April 26, 2022, from 2:00 PM – 5:00 PM and 8:00 PM – 10:00 PM; and Wednesday, April 27, from 8:00 AM until 9:15 AM.
5. Judging will begin at 9:45 AM on Wednesday, April 27.
6. All items MUST be removed from 9:00 – 11:00 PM on Wednesday, April 27.
7. The Classification Chairmen for each division check exhibits for conformity to the schedule prior to judging. Final determination for conformance is the judges' responsibility.
8. The General Chairman and the Classification Chairmen for each division are available during judging for possible consultations. They, along with the judges and clerks, are the only personnel allowed on the floor during judging.
9. The decisions of the judges are final. Awards may be withheld if not merited.
10. There must be an emphasis on **FRESH** plant material. No artificial plant material is permitted in any exhibit in any Division.
11. Each exhibitor is limited to one entry per class, except in the Horticulture Division. Exhibitor may make more than one entry per class if each is a different species, variety, cultivar, type or color.
12. The Ohio Judges Council will strive to assure the safety of all items after arrival and placement, but is not responsible for any loss or damage to exhibits.
13. Plants listed on the Ohio Conservation/Native Plant endangered list may be used in any division if labeled with botanical names and grown by the exhibitor, or obtained in a legal manner, and so marked. No plant material on the State of Ohio Noxious Weeds/Invasive plant lists should be entered in the Horticulture Division. For a listing of plants, visit:  
<https://agri.ohio.gov/wps/portal/gov/oda/divisions/plant-health/invasive-pests/invasive-plants>
14. This Flower Show conforms to the standards established by National Garden Clubs, Inc. The *Handbook for Flower Shows*, 2017 Edition, with changes as posted on the NGC website, is the authority for all issues not covered by the Schedule, which is the Law of the Show. Where the *Handbook for Flower Shows*, 2017 Edition, is hereafter referenced in this Schedule, the abbreviation *HB* shall be used.

## Awards:

1. The **NGC Standard System of Awarding** is used in all divisions.
  - a. Only one (1) first-place (blue) ribbon per class or subclass: must score 90 points or more
  - b. Only one (1) second-place (red) ribbon per class or subclass: must score 85 points or more
  - c. Only one (1) third-place (yellow) ribbon per class or subclass: must score 80 points or more
  - d. One or more Honorable Mention (white) ribbons as merited: must score 75 points or more
2. The **Award of Merit** may be offered to a blue ribbon winner scoring 95 points or more in the Horticulture Division, Section A. Wildly Colorful. Award is a rosette of orange ribbons. See p. 41 of *HB*.
3. The **Grower's Choice Award** may be offered to a blue ribbon winner scoring 95 points or more in the Horticulture Division, Section B. The Great Leafy Indoors, Section C. The Great Flowery Indoors, and Section D. The Great Prickly Indoors. Award is a rosette of dark green ribbons. See p. 41 of *HB*.
4. The **Arboreal Award** may be offered to a blue ribbon winner scoring 95 points or more in the Horticulture Division, Section E. Branching Out and Section F. Branching Up. Award is a rosette of green ribbons. See p. 40 of *HB*.
5. The **Award of Horticultural Excellence** may be offered to the highest scoring blue ribbon winning and correctly named exhibit in the entire Horticulture Division. Award is a rosette of green, orange and blue ribbons. See p. 40 of *HB*.
6. The **Table Artistry Award** may be offered to a blue ribbon winner scoring 95 points or more in the Design Division, Section A. Dining Out(side). Award is a rosette of burgundy ribbons. See p. 43 of *HB*.
7. The **Designer's Choice Award** may be offered to a blue ribbon winner scoring 95 points or more in the Design Division, Section B. Awesome Nature. Award is a rosette of purple ribbons. See p. 42 of *HB*.
8. The **Petite Award** may be offered to a blue ribbon winner scoring 95 points or more in the Design Division, Section C. Wildly Beneficial. Award is a small rosette of blue and white ribbons. See p. 43 of *HB*.
9. The **Award of Design Excellence** may be offered to the highest scoring blue ribbon exhibit scoring 95 or more in the entire Design Division entered by an individual. See p. 42 of *HB*.
10. The **Botanical Arts Artistic Crafts Award** may be offered to a blue ribbon winner scoring 95 points or more in the Botanic Arts Division, Section A. Inspired by Marlene. Award is a rosette of navy blue ribbons. See p. 44 of *HB*.
11. The **Botanical Arts Photography Award** may be offered to a blue ribbon winner scoring 95 points or more in the Botanic Arts Division, Section B. Captured by the Camera. Award is a rosette of black and white ribbons. See p. 45 of *HB*.

12. The **Educational Top Exhibitor Division Award** may be offered to the highest scoring blue ribbon exhibit in the Education Division. Award is a rosette of brown and white ribbons. See p. 43 of *HB*.

## DIVISION I – HORTICULTURE

*“Wild Things, you make my heart sing!”*



Horticulture Consultant and Classification Chairman: Barb Snyder (614) 538-9384

### **Horticulture Rules:**

1. General Rules:
  - a. All exhibits must be FRESH.
  - b. All exhibits must have been grown by the exhibitor.
  - c. Plant material must be in its natural state and may not be altered by the application (treatment) of oil, commercial “shine” products, etc. that change the natural appearance. No wiring of specimens is permitted.
  - d. Only foliage and/or flowers naturally grown and still attached to the specimen are permitted in the Flower Show. Unattached foliage is never included with a cut specimen.
  - e. All plant material must have been in the possession of the exhibitor the appropriate number of days as listed on p. 55 of the *Handbook for Flower Shows*.
  - f. The rules for a single species cut or container-grown specimen are listed in the *Handbook for Flower Shows*, pp. 58-60, or its supplement *Horticulture Exhibiting and Judging*.
  - g. Container-grown specimens may be double potted. The inner container should not be visible.
  - h. In order to receive an NGC Top Exhibitor Award, the exhibitor must identify his/her entry by its binomial name or currently acceptable scientific designation.

- i. Entry cards must be filled out **in advance**, if possible, using waterproof ink. Refer to the *Handbook for Flower Shows*, Chapter 6, for a correctly filled out entry tag. Exhibitor may consult the Classification Chairman **PRIOR** to day of show to help determine correct binomial name.
  - j. Cut specimens should not have foliage below the water line.
  - k. If a plant is considered a flowering plant, it should be exhibited as a flowering specimen. Foliage plants may flower, but should be exhibited as a foliage plant if they are grown for their leaves.
  - l. Specimens with a class designation in the schedule may not be entered in the 'Any Other Worthy' class.
  - m. The Horticulture Classification Committee Chairman and/or General Show Chairman are free to subdivide classes by color, form, size, cultivar, variety or other distinguishing characteristics.
2. Additional Rules:
- a. The show committee will furnish clean containers for cut specimens.
  - b. Wedging for cut specimens is furnished by the show committee.
  - c. An Exhibitor will be limited to **not more than 7** entries in the Horticulture Division.

3. **Scale of Points for All Cut or Container-Grown Horticulture Specimens and Collections**

Conformance	5
Plant Identification	5
Peak of Perfection	
Form	20
Color	20
Maturity/Size	20
Condition/Blemishes	15
Grooming/Staging	
Grooming	10
Staging	5
TOTAL	100

**Section A. Wildly Colorful** Bulbs

Eligible for Award of Merit, *HB* p. 41. Must score 95 or above and meet all criteria in the section. Exhibit must be correctly named with binomial name or currently accepted scientific designation.

Class 1. *Hyacinthus orientalis* Single stem, no leaves

- a. Blue or Purple
- b. Pink
- c. White or Yellow

Class 2. *Narcissus* Single stem, no leaves

- a. Trumpet, one flower per stem (e.g. 'Mt. Hood')
  - 1. Yellow
  - 2. White
  - 3. Bi-Color
  - 4. Other Color
- b. Large Cupped, one flower per stem (e.g. 'Pink Charm')
  - 1. Yellow
  - 2. White
  - 3. Bi-Color
  - 4. Other Color
- c. Small Cupped, one flower per stem (e.g. 'Merlin')
  - 1. Yellow
  - 2. White
  - 3. Bi-Color
  - 4. Other Color
- d. Double, one or more flowers to stem (e.g. 'Cheerfulness')
  - 1. Yellow
  - 2. White
  - 3. Bi-Color
  - 4. Other Color
- e. Jonquilla, one to five flowers to stem (e.g. 'Sailboat')
  - 1. Yellow
  - 2. White
  - 3. Bi-Color
  - 4. Other Color
- f. Miniature, one or more flowers to stem (e.g. 'Minnow')
  - 1. Yellow
  - 2. White
  - 3. Bi-Color
  - 4. Other Color
- g. Any Other Daffodil, must identify type and cultivar (e.g. Tazetta 'Geranium')

Class 3. *Tulipa* Single stem, two attached leaves

- a. Darwin Hybrid
  - 1. White
  - 2. Yellow or Orange
  - 3. Red, Purple, or Pink
  - 4. Striped or Streaked
- b. Triumph
  - 1. White
  - 2. Yellow or Orange
  - 3. Red, Purple, or Pink
  - 4. Striped or Streaked

- c. Single Late
  - 1. White
  - 2. Yellow or Orange
  - 3. Red, Purple, or Pink
  - 4. Striped or Streaked
- d. Double Late (Peony shaped)
  - 1. White
  - 2. Yellow or Orange
  - 3. Red, Purple, or Pink
  - 4. Striped or Streaked
- e. Any Other Tulip, must identify type and cultivar (e.g. Single Early 'Apricot Beauty')

Class 4. Any Other Worthy Bulb - Single stem, include leaves IF attached to stem

### **Section B. The Great Leafy Indoors** Container-Grown Foliage Specimens

Eligible for Grower's Choice Award, *HB* p. 41. Must score 95 or above and meet all criteria in the section. Container not to exceed 12" in any direction. Exhibit must be correctly named with binomial name or currently accepted scientific designation.

Class 5. *Begonia*

Class 6. *Bromeliad*

Class 7. *Dracaena*

Class 8. Fern

Class 9. *Ficus*

Class 10. Ivy

Class 11. Palm

Class 12. Any other container-grown foliage specimen

### **Section C. The Great Flowery Indoors** Container-Grown Flowering Specimens

Eligible for Grower's Choice Award, *HB* p. 41. Must score 95 or above and meet all criteria in the section. Container not to exceed 12" in any direction. Exhibit must be correctly named with binomial name or currently accepted scientific designation.

Class 13. *Begonia*

Class 14. *Bromeliad*

Class 15. *Orchidaceae* (Orchid)

Class 16. *Saintpaulia* (African Violet)

Class 17. Any other container-grown flowering specimen



#### **Section D. The Great Prickly Indoors** Container-Grown Cacti and Succulents

Eligible for Grower's Choice Award, *HB* p. 41. Must score 95 or above and meet all criteria in the section. Container not to exceed 12" in any direction. Exhibit must be correctly named with binomial name or currently accepted scientific designation.

Class 18. *Agave*

Class 19. *Aloe*

Class 20. *Crassula* (i.e. Jade plant)

Class 21. *Echinocactus* (Barrel cactus)

Class 22. *Euphorbia* (i.e. Crown-of-thorns)

Class 23. *Kalanchoe*

Class 24. *Mammillaria* (Pincushion cactus)

Class 25. *Sanseveria* (Snakeplant)

Class 26. *Schlumbergera* (Thanksgiving cactus, Christmas cactus)

Class 27. *Sedum*

Class 28. *Sempervivum* (Hens and Chicks)

Class 29. Any other container-grown cacti or succulent

#### **Section E. Deer Smorgasbord** Cut Shrub Branches

Eligible for Arboreal Award, *HB* p. 40. Must score 95 or above and meet all criteria in the section. Exhibit must be correctly named with binomial name or currently accepted scientific designation. Branch may not exceed 30" in length from cut end to apical tip.

Class 30. Broadleaf Evergreen

Class 31. Needled Evergreen

Class 32. Flowering Branch

Class 33. Any other cut shrub branch

#### **Section F. High Rise Housing** Cut Tree Branches

Eligible for Arboreal Award, *HB* p. 40. Must score 95 or above and meet all criteria in the section. Exhibit must be correctly named with binomial name or currently accepted scientific designation. Branch may not exceed 30" in length from cut end to apical tip.

Class 34. Broadleaf Evergreen

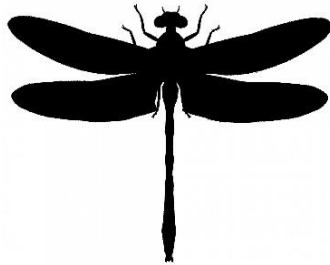
Class 35. Needled Evergreen

Class 36. Flowering Branch

Class 37. Any other cut tree branch

# DIVISION II – DESIGN

*“Wild Things, you make everything groovy.”*



Design Consultant: Debra Turner (505) 463-9035

## Design Rules:

1. General Rules:
  - a. Some plant material must be used in every design. This includes fresh, and/or dried plant material.
  - b. Exhibitor may enter multiple classes within the Design Division, but only one (1) exhibit per class.
  - c. The exhibit entered into competition must be the work of only one (1) exhibitor and that exhibitor's name must appear on the entry card.
  - d. If the designer is unable to fulfill the assignment, it is the designer's responsibility to provide a substitute.
  - e. If the designer is unavailable to transport and/or set up her/his design, a substitute person may enter the exhibit for the designer. The designer may still receive exhibiting credit if needed. This is permitted only for completed designs.
  - f. A single flower is not a design. Container-grown plants are fresh plant material and are permitted in the Design Division where appropriate, but they are **never** considered floral designs.
  - g. Landscapes, scenes or anything representing an actual item of clothing, person, animal, etc., are not considered acceptable in the Design Division.
  - h. Religious symbols used in a design must be displayed in a respectful manner.
2. **Advance registration with the Design Chairman/Consultant is required by April 1, 2022.**
3. Plant material and non-plant material permitted and not permitted in the Design Division are printed in the *Handbook for Flower Shows*, Chapter 7.

4. All plant material used in the design must be identified on a 3x5 card, provided by the exhibitor and included with the entry tag. (Botanical and/or common name acceptable)
3. The exhibitor is required to conform to the stated descriptions and limitations of the Design Type if named in the class.
4. Rules for Design Types, Advanced Design Types, Table Designs, and Table Appointments are printed in the *Handbook for Flower Shows*, Chapter 7.
5. **Scale of Points for all Design Classes:**

Conformance	
To Type	7
To Schedule Requirements	7
Design Principles	48
Selection of Components	8
Organization of Components	8
Expression	8
Distinction	14
<b>TOTAL</b>	<b>100</b>

### **Section A. Dining Out(side)**

Eligible for the Table Artistry Award, . Design must score 95 or above. Award represented by a rosette of burgundy ribbons. Four Exhibits required for each class.

Class 1. **Early Bird** (Alfresco Breakfast)

**A Functional Table** for two

Staged on a card table provided by the committee; designer to provide table covering. Tables will be placed in front of a red brick wall.

Class 2. **Dragons and Damsels** (Picnic at the Lake)

**An Exhibition Table**

Staged on a table covered with black fabric in front of a tan wall. Space allotted 30" wide by 18" deep. Staging panel/underlay permitted but not required.

Class 3. **Oh Deer!** (Around the Campfire)

**A Tray**

Staged on a table covered with black fabric in front of a tan wall. Designer provides tray. Space allotted 30" wide by 18" deep.

## Section B. Awesome Nature

Eligible for the Designer's Choice Award, *HB* p. 42. Design must score 95 or above. Award represented by a rosette of purple ribbons. Four Exhibits required for each class.

- Class 4. **Brandywine Falls** (Cuyahoga Valley National Park)  
A Cascade Design staged on a table covered with black fabric in front of a tan wall. Space allotted 30" wide x 18" deep. Staging panel/underlay permitted but not required.
- Class 5. **Glacial Grooves** (Kelley's Island)  
A Creative Design staged on a table covered with black fabric in front of a tan wall. Space allotted 30" wide by 18" deep. Staging panel/underlay permitted but not required.
- Class 6. **The Rock House** (Hocking Hills State Park)  
A Creative Design staged on a table covered with black fabric in front of a tan wall. Space allotted 30" wide by 18" deep. Staging panel/underlay permitted but not required.

## Section C. Wildly Beneficial

Eligible for the Petite Award, *HB* p. 43. Design must score 95 or above. Award represented by a small rosette of blue and white ribbons. Four Exhibits required for each class.

- Class 7. **Lady Bug**  
A Small Design not less than 3" nor more than 5" in height, width, or depth. Staged on a raised black shelf in front of a gray wall. Space allotted 10" wide x 7 ½" deep. Staging panel/underlay recommended.
- Class 8. **Honey Bee**  
A Small Design not less than 5" nor more than 8" in height, width, or depth. Staged on a raised black shelf in front of a gray wall. Space allotted 10" wide x 11 ½" deep. Staging panel/underlay recommended.
- Class 9. **Praying Mantis**  
A Small Design not less than 8" nor more than 12" in height, width, or depth. Staged on a raised black shelf in front of a gray wall. Space allotted 14" wide x 11 ½" deep. Staging panel/underlay recommended.

# DIVISION III – BOTANICAL ARTS

*“Wild Things, I think I love you.”*



Botanical Arts Consultant: Karen Ciula (614) 471-3246

## Botanical Arts Rules:

1. General Rules:
  - a. All Artistic Crafts exhibits **must contain some plant material**.
  - b. No artificial plant material is permitted in any exhibit.
  - c. The Scale of Points for judging Botanical Arts Horticulture, Design, Artistic Crafts and Photography are listed in Chapter 14 of the *Handbook for Flower Shows*.
  - d. The rules for Botanical Artistic Crafts are printed in the *Handbook for Flower Shows*, Chapter 10.
  - e. The rules for Photography are printed in the *Handbook for Flower Shows*, Chapter 10.
2. **Upcycled plastic must be used in each entry in Section A. Inspired by Marlene.**  
Examples of plastic items that could be used are bags, cups, plates, straws, bottles, utensils, etc. Other materials may also be used, but some upcycled plastic **must** be used. All plant material **and all upcycled material** used in the entry must be identified on a 3x5 card, provided by the exhibitor and included with the entry card (Scientific and/or common name acceptable).
3. **Photos entered in Section B. Wild Things Captured! must be matted; no frames.**  
Overall dimensions of entry, including matting, shall not exceed 12" in length or width. Entries will be attached by clips to a standing, vertical display.

**4. Scale of Points for Botanical Arts Artistic Crafts:**

Conformance	14
Design	48
Craftsmanship/Technique	24
Distinction	14
<b>TOTAL</b>	<b>100</b>

**5. Scale of Points for Photography:**

Conformance	5
Interpretation of Class Title	10
Composition	25
Artistry/Creativity	25
Technical Achievement	25
Distinction/Impact (Wow! Factor)	10
<b>TOTAL</b>	<b>100</b>

**Section A. Inspired by Marlene**

Eligible for the Botanical Arts Artistic Crafts Award, *HB* p. 44. Design must score 95 or above. Award represented by a rosette of light brown ribbons. Four exhibits required for each class.

**Class 1. Big Brown Bat**

A hanging planter (displayed without plant). Must be able to be hung from a cup hook (provided by Committee). Will be staged within an open frame. Entry must not exceed 30" height, top to bottom, including wire/string/chain (provided by exhibitor) for hanging. Width not to exceed 24".

**Class 2. Carolina Wren**

A bird house (may be functional or just decorative). Space allotted 15" x 15".

**Class 3. Spotted Salamander**

A garden art object (Ex. Wind chimes, rain gauge, sculpture, etc.). Space allotted 30" wide x 18" deep.

## **Section B. Wild Things Captured!**

Eligible for the Botanical Arts Photography Award, *HB* p. 45 . Photo must score 95 or above. Award represented by a rosette of black and white ribbons. Four or more exhibits required for each class.

Class 4. **Ohio's Wild Places** – photo of a naturally occurring landscape, geological feature, or water feature within Ohio. Location must be identified on a 3" x 5" card that will be displayed with photo. Other descriptive information may be included on the card.

Class 5. **Wildflowers of Ohio** – close-up photo of a wildflower native to Ohio. Species must be identified (common or scientific name) on a 3" x 5" card that will be displayed with photo. Other descriptive information may be included on the card.

Class 6. **Ohio's Wild Animals** – photo of a wild animal native to Ohio (Ex: deer, raccoon, opossum, snake, amphibian, etc.) shown in its native habitat. Individual or multiple animals, i.e. herd or group, may be featured. Species must be identified (common name) on a 3" x 5" card that will be displayed with photo. Other descriptive information may be included on the card.

## **DIVISION IV – EDUCATION**

*“Wild Things, you move me.”*



Education Consultant: Pat Rupiper (740) 703-3683

## Education Rules:

1. Education Exhibits may be the work of more than one individual or organization unless a Student Judge or an Accredited Judge is seeking exhibiting credit for preparing an education exhibit.
2. An exhibit must occupy a minimum of eighteen (18) square feet surface area.
3. Some plant material is required.
4. Allotted exhibit space is two (2) 5' long by 18" deep tables.
5. **Scale of Points for Educational Exhibits:**

<b>Educational Value</b>	
Interest to Viewer	25
Clear, concise presentation	15
Adequate signage	10
Conforms to NGC Objectives	10
<b>Staging</b>	
Craftsmanship/Technique	10
Distinction	10
Creativity and Expression	20
<b>TOTAL</b>	<b>100</b>

## Section A. It's Our Nature

Eligible for Educational Award, *HB* p. 43. Exhibit must score 95 or above. Award is a rosette of brown and white ribbons.

- Exhibit 1.     **Wild for Pollinators**
- Exhibit 2.     **Wetlands Help Ohio**
- Exhibit 3.     **Ohio's Native Plants**
- Exhibit 4.     **Discover Your Ohio Adventure – Ohio State Parks**